

MIGHTY 21 Series

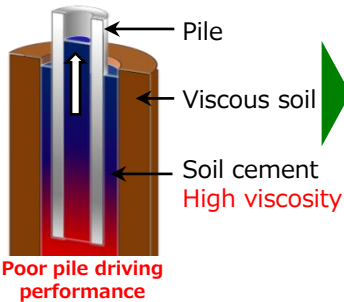
Soil Cement Dispersant

Shorter construction durations, sludge reduction

Achieving smooth pile construction in clay soils

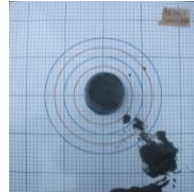
Shortened construction durations

Pile construction in viscous foundations

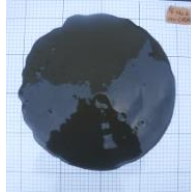


Lowering the viscosity of soil cement

w/o admixtures

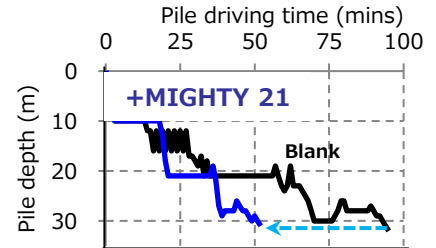


MIGHTY 21



Improved pile driving performance

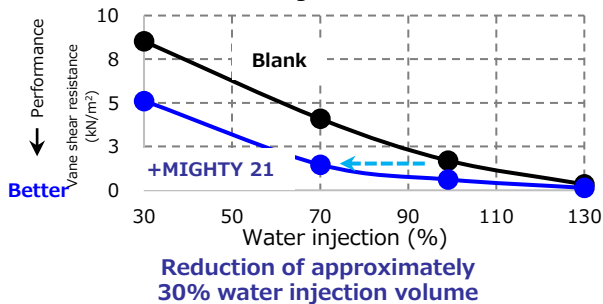
Construction duration comparison



Smoother pile construction

Sludge reduction

Water injection reduction



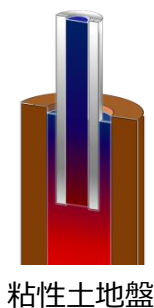
Versatility in different soils

Soil type	Water content (%)	Dosage (C×%)	Sludge reduction (%)
Viscous soil	74.2	2	35
Kanto loam	53.9	2	40
Tufaceous clay	92.7	2	31

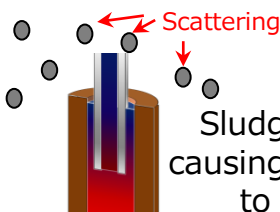
Kao laboratory test results
Conditions: OPC, various soils, W/C=60%, hardening agent dosage:300kg/m³

Sludge reduction achieved in different soil types

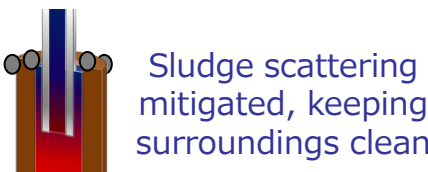
Sludge scattering mitigation



Blank



+MIGHTY 21



Sludge scattering

Clean surroundings maintained

The information and recommendations in this publication are to the best of our knowledge reliable. However, nothing herein is to be construed as a warranty or representation. Users should make their own tests to determine the applicability of such information or the suitability of any products for their own particular purpose. For more enquiries, please contact the following.

Kao Corporation Chemical Business Eco Infrastructure

Sumida Office 2-1-3 Bunka, Sumida-ku, Tokyo 131-8501

Osaka Office 1-4-1 Itachibori, Nishi-ku, Osaka, Osaka Prefecture 550-0012

HP : <https://chemical.kao.com/jp/>

Mail : chemical_eif@kao.com